

## AQUASAN ONESTOP® PACKAGE

CLEAN WATER · SAFE SANITATION

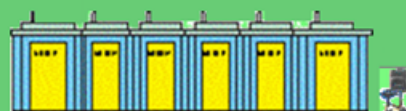
**SIMPLICITY.SCALE.SUSTAINABILITY**

AquaSan *OneStop*® Packages are simple, easy to use and sustainable solutions to your water and sanitation needs. Our *OneStop*® Packages are created through effective integration of innovative water and sanitation products. We are able to deliver and commission our packages even in the most remote locations as they are lightweight, transportable and pre-fabricated for rapid installation. Save time, effort and money by choosing an AquaSan *OneStop*® Package today!

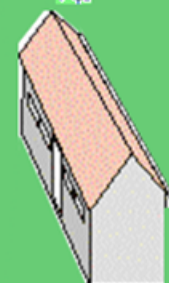
### Budget School Package 1X5K - Rainwater 1X6 Stance

Ideal for Schools in High Rainfall Locations

Concept Overview:	A simple package that enables the collection and disbursement of rainwater and introduces sanitation for pupils and teachers. Hand wash facilities are also provided. Total storage is 5,000L in a single.
School Size:	Up to 500
School Mix:	Boys and Girls, Boys Only, or Girls Only
Water Source:	Rainwater only, thorough installation of gutters
Water Storage:	5,000L in 1 X 5000L tanks on sand and block bases
Water Distribution:	From tanks to pre-fabricated steel tap stand embedded in concrete
Sanitation Blocks:	1 X 6 Stance Blocks for School Children and 1 X 2 Stance Block for Teachers
Sanitation Type:	Urine Diversion or Standard Keyhole



1 X 6 stance Mobilet®  
with hand wash facility



Rainwater Tank



2 stance Mobilet®  
with hand wash facility

**Delivery and Installation:** We are committed to delivery, installation and commission of all AquaSan *OneStop*® Packages. Please request a detailed quotation for every package, as price will vary by location and conditions on the ground.



# AQUASAN ONESTOP® PACKAGE

CLEAN WATER SAFE SANITATION  
SIMPLICITY.SCALE.SUSTAINABILITY

## Budget School Package 1X5K - Rainwater 1X6 Stance

### Bill of Materials

Area	Sub Area	Description	Unit	Qty	
Sanitation	<b>Mobilet® Superstructure</b>	Standard Stand Alone Two Stance Mobilet® Male & Female	Set of Two Toilets	1	
		Standard In-Line 1M X 1M Stance Mobilet®	Pc	4	
		Large In-Line 1.4M X 1M Stance	Pc	2	
	<b>Mobilet® Slab</b>	Standard 1M X 1M Urine Diversion Slab or Keyhole Slab	Pc	6	
		Large 1.4M X 1M Urinal Slab or Washroom Slab	Pc	1	
		Large 1.4M X 1M Disabled Slab	Pc	1	
	<b>PitWall® Liner</b>	FOR STABLE SOILS (1M Lining)			
		Cross Member Support 0.8M X 0.25M	Pc	25	
		End Panel 0.8M X 1M	Pc	4	
		Side Panel 0.75M X 1M	Pc	18	
		OR FOR UNSTABLE SOILS (3M Lining)			
		Cross Member Support 0.8M X 0.25M	Pc	75	
	<b>Site Works</b>	End Panel 0.8M X 1M	Pc	12	
		Side Panel 0.75M X 1M	Pc	54	
		0.8M Wide X 5.4M Long X 3M Deep pit for Children's Toilet. 1.5M walk way around the front of the toilet made with 2" paving blocks.	No	1	
0.8M Wide X 1.5M Long X 3M Deep pit for Teachers Toilet. 1.5M walk way around the front of the toilet made with 2" paving blocks.		No	1		
<b>Wonderloo® Pedestal</b>	Soak Pit 3 M <sup>3</sup>	No	1		
	Disabled Pedestal for Mounting onto Slab	Pc	1		
Water and Rainwater	<b>Tanks</b>	150 Handwash Tank and stand	Pc	2	
		5000 L Tank with sand and block base, 3/4" outlet with lockable tap. Surrounded by 1M tall chainlink fence to prevent unnecessary access.	Pc	1	
	<b>Gutters</b>	6M of 4" uPVC Gutters with connectors, stop ends and down pipe	Set	1	
	<b>Site Works</b>	Excavation and Installation of Sand/Block Base	No	1	